



Official Partner



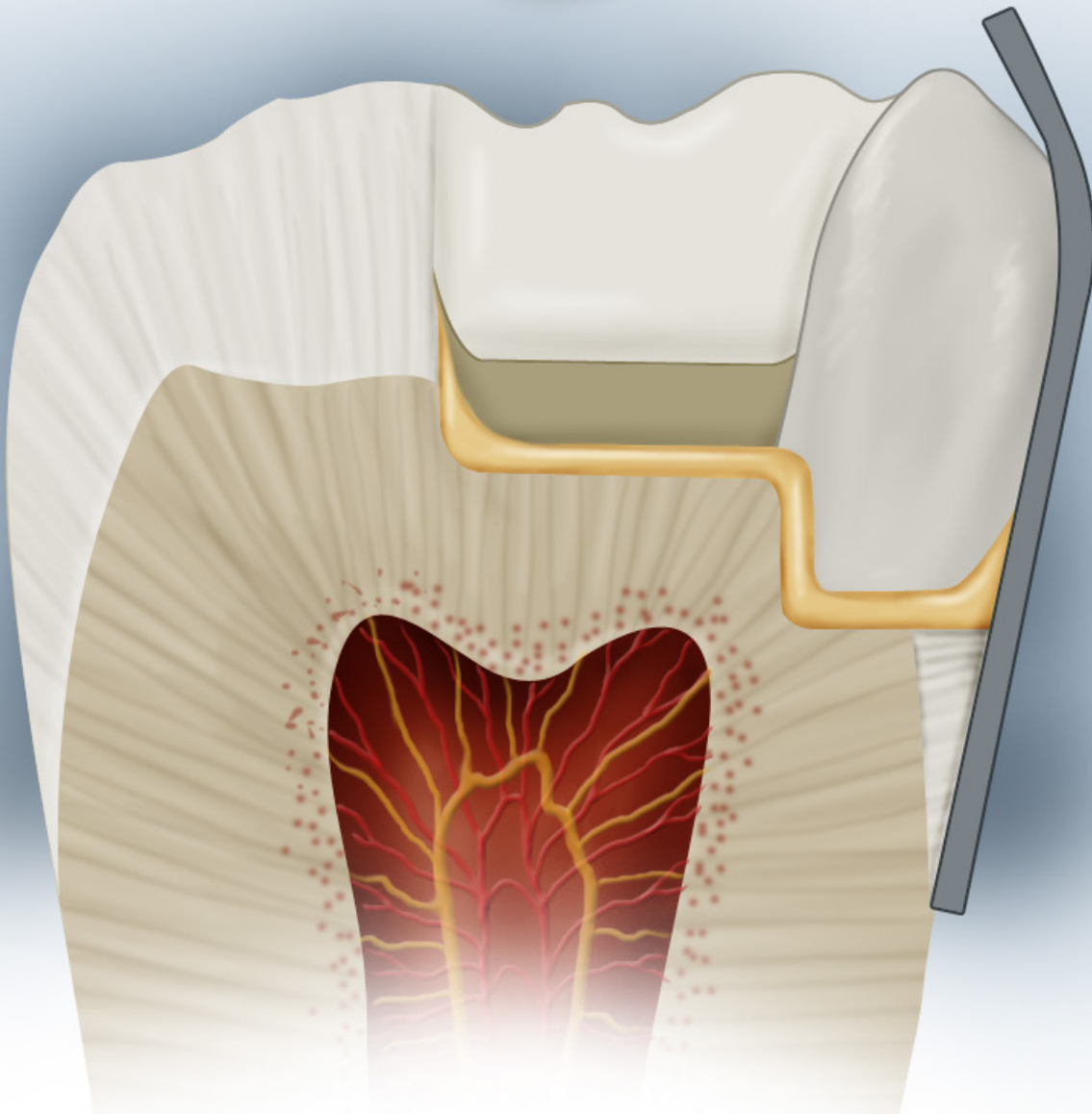
BEAUTIFIL Flow Plus®

FINALLY, AN INJECTABLE HYBRID RESTORATIVE
FOR ALL INDICATIONS

VISIT WWW.SHOFU.COM

SHOFU

CALL 800.827.4638



FINALLY, A BASE LINER AND

BEAUTIFIL Flow Plus

While hybrid composites revolutionized dentistry with aesthetics and strength, they have limited adaptation to tooth structure, a high incidence of voids, and time-consuming application. Flowable resins, with their favorable adaptation and effortless delivery, complemented hybrids in the clinicians' armamentarium, yet have had limitations in terms of durability, strength, and handling properties—**until now**.

BEAUTIFIL Flow Plus is the next step in the evolution of restorative materials, combining the delivery of a flowable and the strength, durability, and aesthetics equal to or better than leading hybrid composites.

BEAUTIFIL Flow Plus is approved for every classification—including the occlusal surface and proximal margins. With improved handling, stackability, and a non-sticky consistency, posterior restorations have never been easier. Moreover, the ability of **BEAUTIFIL Flow Plus** to release and recharge fluoride and resistance to bacterial colonization makes it ideal for patients with a high caries index, or as a glass ionomer alternative.

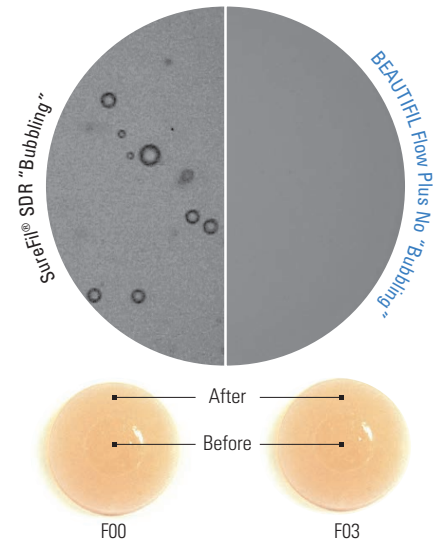
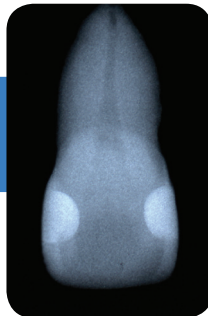
■ *Surface Pre-Reacted Glass (S-PRG) ionomer technology proven by independent clinical trials as published in JADA**

■ *Aesthetics and durability that permit use in all classifications*

■ *High radiopacity that permits viewing and maintenance of treated sites*

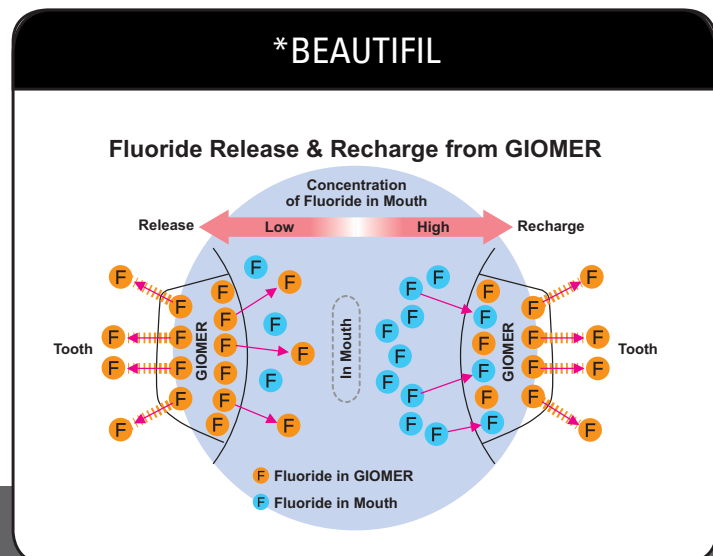
■ *Sustained fluoride release and rechargability*

■ *Anti-plaque effect that resists bacterial adhesion on the material surface*



Color stability before and after curing.

The ability of **BEAUTIFIL Flow Plus** to release and recharge fluoride and to resist bacterial colonization makes it an ideal restorative for secondary caries.



GIOMER TECHNOLOGY

GIOMER Products are the latest hybrid composite materials availed to dental practitioners. S-PRG ionomer cements are used as fillers in GIOMER Products and are obtained by reacting acid-reactive fluoride-containing glass with polyacids in the presence of water.

These S-PRG fillers release fluoride and recharge the GIOMER. The fluoride in a GIOMER is responsible for:

- Reducing tooth mineral solubility; and
- Decreasing the acid production of cariogenic bacteria.

*Eight-Year Clinical Study, University of Florida

RESTORATIVE ALL IN ONE

360° Rotary Finger Grip

Adjust flow direction without relaxing grip

BEAUTIFIL Flow Plus F03

Ideal Base, Liner

- Viscosity of a traditional flowable
- Good wetting capability
- Effortless adaptation

Syringe Design

- No drip or ooze eliminates product waste

BEAUTIFIL Flow Plus F00

It Just Stays Put!

- Non-slumping
- Precision stacking
- Proximal wall/core build-up material

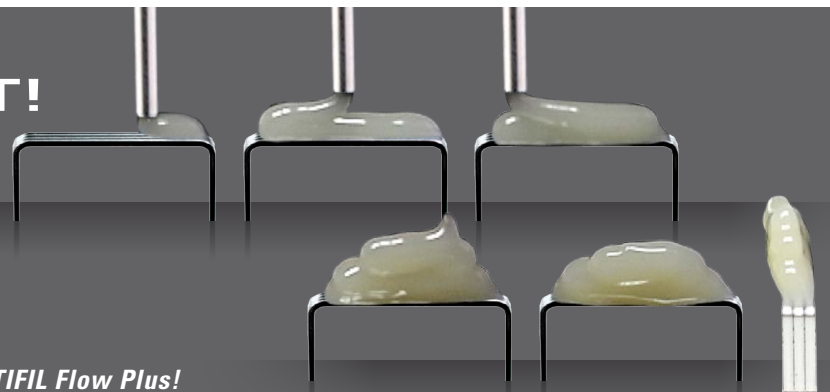
"We have been using the new F00 composite and love it! We used it as a core material and also for some class 1-5 fillings. I am amazed at how well it polished and how snug the contacts came out. And it stays where you put it."

~ Dr. Jamie Sunners, Natick, MA

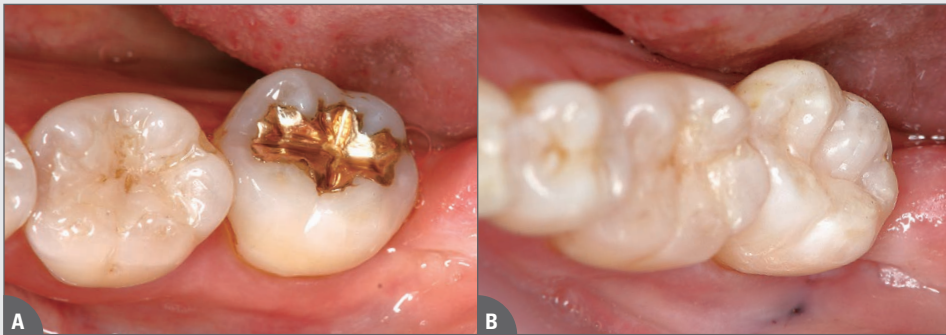
IT JUST STAYS PUT!

With unique handling characteristics, BEAUTIFIL Flow Plus allows precision stacking that will not slump or spill out of the prep. This is particularly important when working at awkward angles or with fidgety patients.

Ask your rep today to demonstrate the handling of BEAUTIFIL Flow Plus!



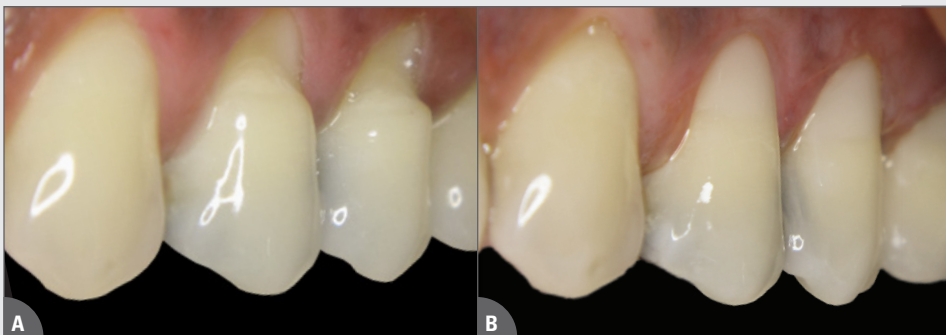
CLINICAL INDICATIONS



Case 1

- A.** Preoperative view of gold inlay requiring replacement.
- B.** Postoperative view demonstrates use of BEAUTIFIL Flow Plus on occlusal surfaces.

Dr. Naotake Akimoto, Tsurumi University, Japan



Case 2

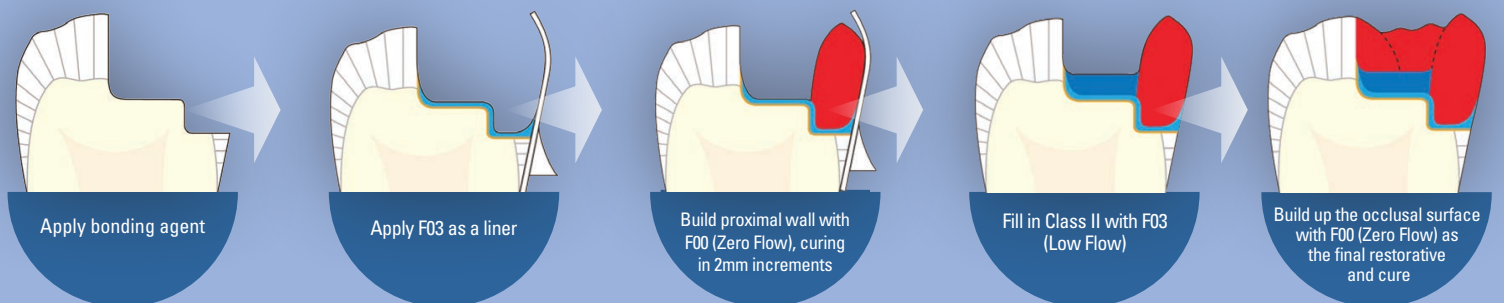
- A.** Class V restorations requiring treatment with direct resin restorations.
- B.** Immediate postoperative view following placement of BEAUTIFIL Flow Plus.

Dr. Howard Glazer, Fort Lee, New Jersey

- Class I to V restorations
- Minimally invasive restorations
- Root caries restorations
- Filling primary teeth
- Restoring defects in enamel
- Additional filling and modification after composite resin filling
- Undercutting blockouts

Resin Cone Technique

Simply prepare the tooth using your technique of choice, apply any bonding agent (e.g., BeautiBond or FL Bond II), apply Low Flow as a base liner, and build up to the occlusal surface using Zero Flow. The self-leveling nature of BEAUTIFIL Flow Plus means placement and polishing have never been easier!

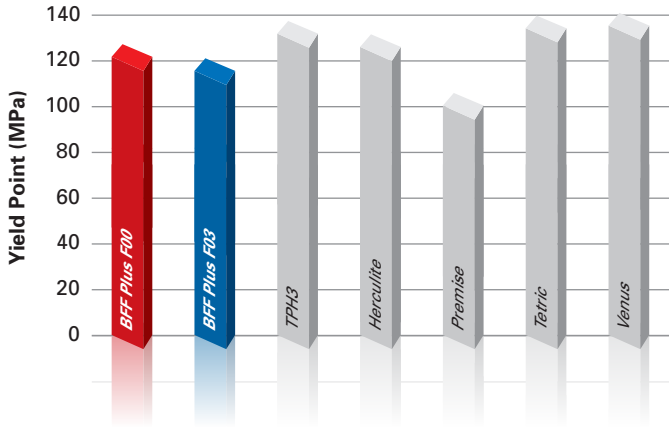
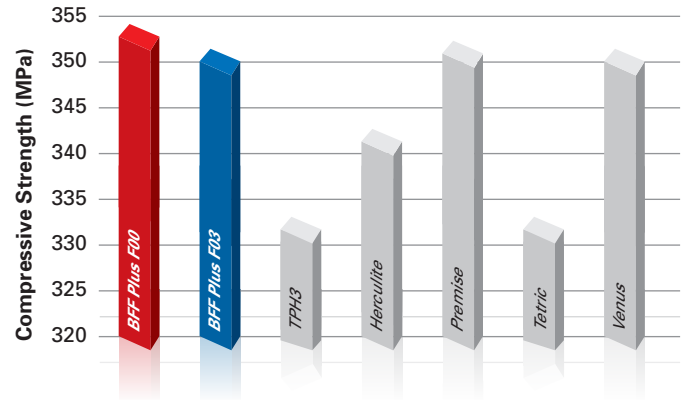


■ F00 (Zero Flow) ■ F03 (Low Flow)

PERFORMANCE UNDER PRESSURE

Compressive Strength vs. Hybrid Composites

The superior compressive strength of BEAUTIFIL Flow Plus can easily withstand high stress loads on the occlusal surface and marginal ridge.

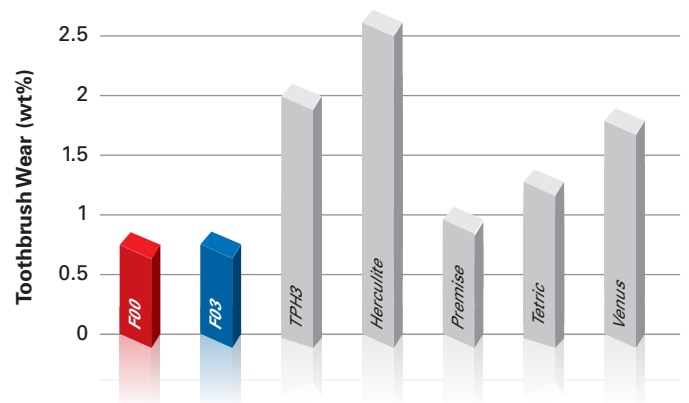


Yield Point vs. Hybrid Composites

A high Yield Point ensures that the material can resist deformation over repeated compression cycles.

Wear Resistance vs. Hybrid Composites

An extremely low wear rate provides long-term aesthetics over the life of the restoration, maintaining a high luster.



BASE LINER AND RESTORATIVE ALL IN ONE

- **Strength:** The flexural and compressive strength of BEAUTIFIL Flow Plus is equal to or superior to those of the leading hybrid composites.
- **Performance:** This GIOMER material can be used as a traditional flowable (ie, base/liner) as well as on the occlusal and/or facial surfaces of a tooth.
- **Aesthetics:** The diffusion of light with BEAUTIFIL Flow Plus, as with BEAUTIFIL II, is similar to that of a natural tooth.
- **Simplicity:** BEAUTIFIL Flow Plus has shade stability prior to and following curing, thus providing clinicians with a short learning curve when applying for aesthetic restorations.

BEAUTIFIL Flow Plus

FINALLY, A BASE LINER AND RESTORATIVE ALL IN ONE!

VISIT WWW.SHOFU.COM

SHOFU

CALL 800.827.4638



BEAUTIFIL Flow Plus F00 (Zero Flow) weight: 2.2g syringe/0.21g x 20 tips

Shade	Syringe/Tips No.
A0.5	2000 / 2200
A1	2001 / 2201
A2	2002 / 2202
A3	2003 / 2203
A3.5	2004 / 2204
A4	2005 / 2205
A0.5O	2006 / 2211
A1O	2007 / 2212
A2O	2008 / 2213
B1	2062 / 2206
B2	2063 / 2207
C2	2064 / 2208
D2	2065 / 2209
Incisal	2010 / 2215
Bleach White	2011 / 2216



BEAUTIFIL Flow Plus F03 (Low Flow) weight: 2.2g syringe/0.21g x 20 tips

Shade	Syringe/Tips No.
A0.5	2013 / 2218
A1	2014 / 2219
A2	2015 / 2220
A3	2016 / 2221
A3.5	2017 / 2222
A4	2018 / 2223
A2O	2020 / 2229
A3O	2021 / 2230
B1	2066 / 2224
B2	2067 / 2225
C2	2068 / 2226
D2	2069 / 2227
Incisal	2023 / 2232
Bleach White	2024 / 2233
Milky White	2026 / 2235
Cervical	2027 / 2236

ZERO FLOW KIT (F00)

(Item No. 2000BF00)

- One 2.2g syringe of each A1 and A4
- Two 2.2g syringes of each A2 and A3
- (50) 0.1mL BeautiBond Unit Dose
- 50 microbrushes

LOW FLOW KIT (F03)

(Item No. 2000BF03)

- One 2.2g syringe of each A1 and A4
- Two 2.2g syringes of each A2 and A3
- (50) 0.1mL BeautiBond Unit Dose
- 50 microbrushes



BeautiBond®

BeautiBond Bottle

(Item No. 1781)

- 6mL, 50 microbrushes

BeautiBond Unit Dose

(Item No. 1782)

- (50) 0.1mL unit doses
- 50 microbrushes



BEAUTIFIL Flow Plus Kits

Standard Kit (Item No. 2000S)

- One 2.2g syringe each of F00 (A2 and A3)
- One 2.2g syringe each of F03 (A2 and A3)
- Additional Shofu samples

Pedo Kit (Item No. 2000P)

- One 2.2g syringe each of F00 (A1 and BW)
- One 2.2g syringe each of F03 (A1 and BW)
- Additional Shofu samples

USA

Shofu Dental Corporation
1225 Stone Drive
San Marcos, CA 92078-4059,
USA

JAPAN

SHOFU Inc.
11 Kamitakamatsu-cho
Fukuine, Higashiyama-ku
Kyoto 605-0983, Japan

SINGAPORE

Shofu In. Singapore Branch
10 Science Park Road #03-12
The Alpha, Science Park II
Singapore 117684

U.K.

SHOFU UK Riverside House,
River Lawn Road, Tonbridge,
Kent, TN9 1EP, UK

CHINA

Shofu Dental Trading
(Shanghai) Co. Ltd.
No.645 Jiye Road
Seshan Industry Park
Songjiang 201602, Shanghai,

GERMANY

EU Representative:
Shofu Dental GmbH
Am Brüll 17
40878 Ratingen, Germany

Herculite XRV, Premise, SureFil SDR, Tetric, TPH3, and Venus are not registered trademarks of Shofu.

*Gordan, Mondragon, Watson, et al. A clinical evaluation of a self-etching primer and a giomer restorative material: Results at eight years. J Am Dent Assoc 2007;138(5):621-627.

SN132-0717